

As Recorded by ERIC CLAPTON
Tears In Heaven

238

For SATB* and Piano
Performance Time: Approx. 4:30

Arranged by
ROGER EMERSON

Words and Music by ERIC CLAPTON
and WILL JENNINGS

With feeling (♩ = ca. 72)

Soprano

Alto

Tenor

Bass

5

mp - mf
Unis.

*+ 2 lully
piccolo*

Would you know my name -

mp - mf
Unis.

if I saw you in heav -

9

en? Would it be the same -

if I saw you in heav -

13 A little more

en? I must be strong -

15

and car - ry on -

Unis.

'cause I know I don't be - long

19

To Coda ⊕

here in heav - en. + 3 takty pauza

Unis.

23

mf

Would you hold my

mf

Would you hold my hand

hand, if I saw you in heav - en?

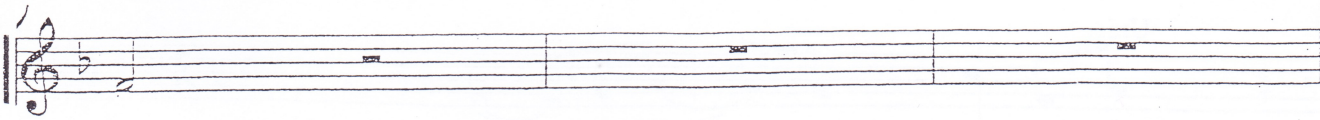
27 Unis.
 Would you help me stand _____
 Would you help me

if I saw you in heav - en?
 stand

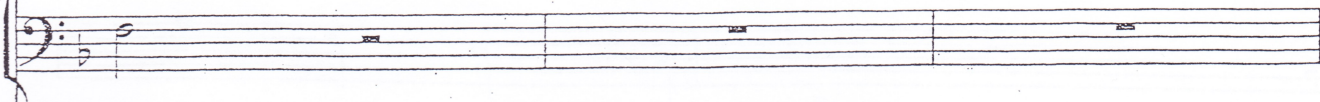
31 A little more
 I'll find my way _____

33
 through night and day _____ 'cause I know.

Unis. 36
 I just can't stay _____ here in heav -
 Unis.

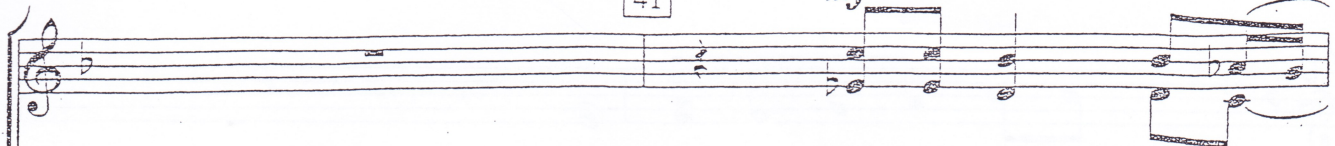


en.



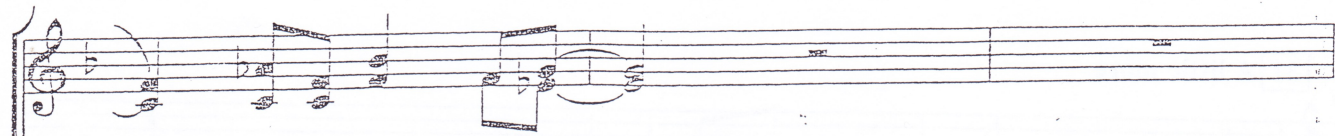
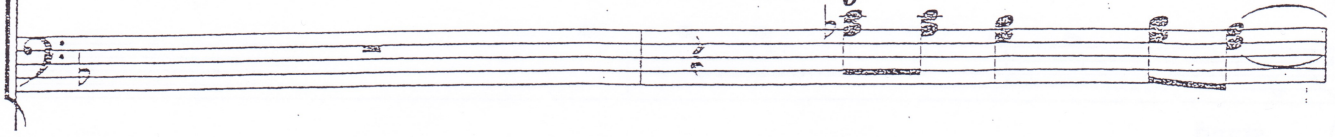
41

mf



Time can bring you down —

mf



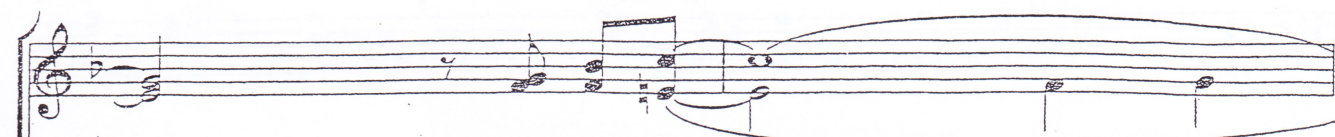
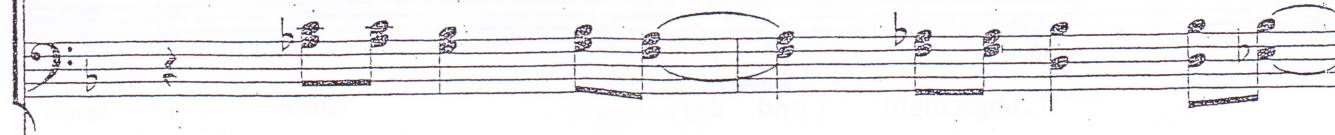
time can bend your knees. —



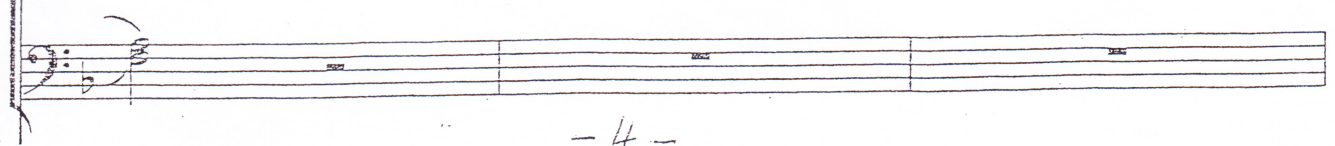
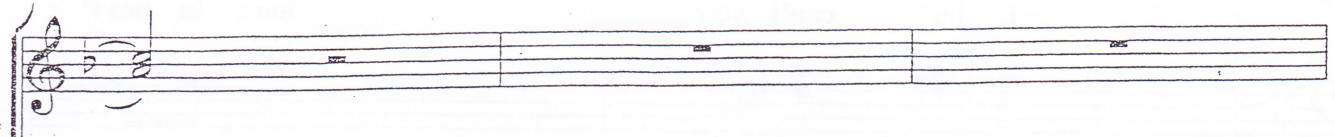
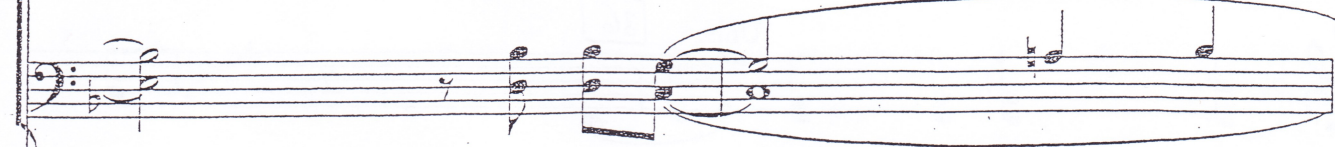
45



Time can break the heart — have you beg - gin' please, —



beg - gin' please. —



53

Be - yond the door_ Unis.

55

there's peace I'm sure_

Unis.

and I know_ they'll be no more_

59

tears in heav - en. Unis.

+3 takky pausa

CODA

en.

rit. e dim.

rit. e dim.

en.